



**Proposal for the Construction of Mangal Nalanda Buddha Vihar  
and  
Eco-Tourism Project**

**Project Location and Area:**

Rupandehi District, Kanchan Rural Municipality-4, Tallo Asnaiya  
Total Area: 5.12 hectares

**Proposal submitted to:**

.....  
.....

**Proposal submitted by:**

Nepal Magar Budda Sewa Samaj  
Mangal Nalanda Buddha Vihar Committee, Rupandehi, Nepal

**Contact:**

Nepal Magar Budda Sewa Samaj, Central Committee  
Email: [Deo66740@gmail.com](mailto:Deo66740@gmail.com)  
Mobile: +977-9851098064

## Table of Content:

1. Proposal Overview .....	1
2. Background .....	1
3. Project Goals .....	2
4. Project Objectives .....	2
4.1 Social Services and Community Empowerment .....	2
4.2 Educational and Research .....	3
4.3 Religious and Spiritual .....	3
4.4 Cultural Preservation and Promotion .....	3
4.5 Economic and Eco-Tourism Development .....	3
5. Rationale of the Project .....	3
5.1 Socio-Economic Development Catalyst: .....	4
5.2 Educational Hub: .....	4
5.3 Cultural Preservation Center: .....	4
5.4 Spiritual and Religious Core: .....	4
5.5 International Outreach Platform: .....	4
5.6 Sustainable Environment: .....	4
6. Decisions made for the project .....	4
7. Phasewise Project Description .....	6
7.1 Project Phase-I .....	6
7.2 Project Phase-II .....	6
7.3 Project Phase-III .....	7
8. Project Activities .....	8
9. Target Groups .....	9
10. Expected Results .....	9
11. Implementing Strategy .....	9
12. Environmental impact .....	9
13. Financial Sources .....	10
14. Estimated Budget .....	10
15. Responsible Persons of the Project .....	10
16. Monitoring and Evaluation .....	11

17.Achievements after completion of the Project.....	11
Long-term Outcomes: .....	11
18.Conclusion .....	11
19.Contact details.....	12
20.Bank Details.....	12
21.Annexes: .....	12

## 1. Proposal Overview

Nepal, as the esteemed birthplace of Lord Buddha and a vessel of profound Buddhist civilization, holds a significant position in global spiritual heritage. For the past three decades, the Nepal Magar Budda Sewa Samaj has been diligently engaged in community-level promotion of Buddhist teachings, the Theravada tradition, moral education, meditation practices, and cultural tourism.

In harmony with the long-term strategic objectives of this sustained endeavor, a comprehensive plan has been developed to realize an enduring, internationally recognized "Nalanda Buddhist Educational, Eco-Tourism, and Spiritual Center."

To bring this strategic vision to realization, a formal proposition is hereby submitted for the establishment of the "Mangal Nalanda Buddha Vihar and Eco-Tourism Project" on the designated land area of 5.12 hectares situated in Tallo Asnaiya, Kanchan Rural Municipality- 4, Rupandehi District.

## 2. Background

Nepal Magar Budda Sewa Samaj, a non-profit social organization was established with the declared mandate of preserving and strengthening the Buddhist philosophy, the Theravada tradition, and the distinct cultural identity inherent to the Magar community.

The organization significantly contributes to social transformation by systematically integrating integral Buddhist cultural values, ethical instruction, meditation disciplines, and the core principles of non-violence into daily life. Furthermore, it actively fosters peace, social cohesion, and the development of sustainable spiritual tourism.

Following the re-establishment of democracy in Nepal in 2046 B.S. (1990 A.D.), senior members of the Magar community initiated a focused exploration of religious practices. This deliberation led to the formation of an ad-hoc committee in 2053 B.S. (1996 A.D.) under the coordination of the late Mr. Gore Bahadur Khapangi Magar, then President of the Nepal Magar Association. The foundational shift was formalized during the International Conference of the Nepal Magar Association, held in Birtamod, Jhapa District, on Ashwin 2-3, 2055 B.S. (September 18-19, 1998). This conference issued a historic declaration, which, while respecting the fundamental right to freedom of religion, asserted that Buddhism constitutes the ethnic religion of the Magar people, based on historical, linguistic, cultural, and philosophical evidence. This declaration received official endorsement by the 7th General Convention of the Nepal Magar Association, convened in Dharan, Sunsari, from Falgun 21-23, 2057 B.S. (March 4-6, 2001). Formation and Activities of the Nepal Magar Budda Sewa Samaj To systemically advance Buddhist education, philosophy, and religious traditions within the community, an ad-hoc committee for the Nepal Magar Budda Sewa Samaj was established between Chaitra 28-30, 2057 B.S. (April 10-12, 2001) under the leadership of Mr. Tej Bahadur Thapa Magar. This preliminary body subsequently formed the

Central Committee of the Society, chaired by Captain Deo Bahadur Rana Magar. Since its inception, the Society has significantly expanded its organizational presence across the country, establishing operational units across all 7 provinces and 70 districts, extending down to the rural municipality and ward levels. A considerable number of community members have attained higher academic qualifications in Buddhist studies and philosophy, including Bachelor's and Master's degrees, and some individuals are currently pursuing PhD research. The promotion of Buddhist education, philosophy, and ethical values has contributed significantly to fostering peace, prosperity, and local environmental sustainability within both the community and the nation. The Mangal Nalanda Buddha Vihara Project Proposal Despite its three decades of dedicated activity in promoting Buddhist philosophy and practice, the Magar community has not yet managed to systematically construct a single, comprehensive Buddha Vihara (monastery). Recognizing this critical institutional gap, the Nepal Magar Buddha Sewa Samaj convened a session in Pokhara from Chaitra 13–15, 2072 B.S. (March 26–28, 2016). The ensuing Pokhara Declaration of the International Conference articulated the formal concept of establishing a central Buddha Vihara. In execution of this decision, and supported by the financial, physical, and intellectual contributions of domestic and international donors, institutions, and devoted individuals, a comprehensive plan has been developed.

### **3. Project Goals**

The fundamental purpose of the Mangal Nalanda Buddha Vihara Project is the revitalization of Theravada Buddhist practice, philosophy, and cultural practices within the community. The project is designed to contribute holistically to sustainable development by integrating religious, educational, cultural, social, and economic dimensions, particularly through eco-tourism promotion.

### **4. Project Objectives**

The attainment of the project objectives will be facilitated through the execution of the followings;

#### **4.1 Social Services and Community Empowerment**

- Organizing Health camps and blood donation programs, executing tree plantation and comprehensive environmental protection initiatives, participating actively in disaster relief and humanitarian assistance efforts.
- Implementing empowerment programs specifically targeting women and youth, conducting activities to foster social inclusion, peace, and communal harmony.

## **4.2 Educational and Research**

- Establish a center for Buddhist education, research, and knowledge development to strengthen Buddhist teachings and ethics in the new generation.
- Provide quality education, training, and residence to monks and nuns, enabling them to become capable and competent.

## **4.3 Religious and Spiritual**

- Revive Buddhist religion, teachings, and the Theravada tradition within the community and promote a lifestyle based on peace, compassion, and moral values.
- Establish practices such as meditation, worship, preaching, and Buddhist rituals systematically and regularly.

## **4.4 Cultural Preservation and Promotion**

- Preserve and promote the community's traditional cultural values, arts, knowledge, and practices.
- Highlight and showcase Buddhist culture and Magar identity at national and international levels through museums, exhibitions, and cultural centers.

## **4.5 Economic and Eco-Tourism Development**

- Ensure local employment, income growth, and overall economic development through the promotion of religious and cultural tourism.
- Establish Nepal as an international destination for Buddhist teachings, Magar culture, and peaceful coexistence.

## **5. Rationale of the Project**

The Nepal Magar Buddha Sewa Samaj is actively pursuing the establishment of the Nepal Mangal Nalanda Buddha Vihara as a significant, visionary undertaking, directly supporting the organization's overarching goals for Buddhist education promotion and tourism development.

This initiative extends beyond the mere construction of a religious edifice; it constitutes a pivotal and historic commitment to the holistic religious, educational, cultural, and social advancement of the entire community and Buddhist adherents, simultaneously bolstering religious tourism.

Consequently, the concept for the Mangal Nalanda Buddha Vihara has been formulated as an integrated project. It is specifically designed to merge modern educational pedagogy, sustained meditation practice, and cultural enrichment rooted in the historic Theravāda tradition with the development of a robust religious tourism infrastructure.

Slated for development on 5.12 hectares of land in Tallo Asnaiya, Ward No. 4, Kanchan Rural Municipality, Rupandehi District, the successful execution of this multi-purpose Buddha Vihara project is projected to achieve the following key objectives:

**5.1 Socio-Economic Development Catalyst:** The project will actively contribute to local economic growth and create employment opportunities through the organization of health camps, provision of social services, and focused tourism promotion.

**5.2 Educational Hub:** It will serve as a center for Buddhist learning and research, offering residential facilities and comprehensive education for monks and nuns. Furthermore, it will facilitate Pariyatti (theoretical) education, studies on Buddhist philosophy, and the administration of scholarship programs.

**5.3 Cultural Preservation Center:** The Vihara will be instrumental in the preservation and promotion of the community's heritage, encompassing their language, art, dance, traditional knowledge, and culture, through initiatives such as the establishment of dedicated exhibitions and museums.

**5.4 Spiritual and Religious Core:** It will host regular worship services and rituals, organize meditation retreats, conduct Dhamma talks, and facilitate the consistent practice of Buddhist rites and ceremonies.

**5.5 International Outreach Platform:** The project is strategically positioned to elevate Nepal's standing as an international center for Buddhist philosophy, culture, and the promotion of peaceful coexistence. It is intended to function as an essential bridge, fostering religious, cultural, and educational collaborations between all Buddhist adherents within Nepal and the broader international community.

**5.6 Sustainable Environment:** This project will prioritize environmental sustainability and contribute to sustainable development.

## **6. Decisions made for the project**

Formal Resolutions and Institutional Decisions Regarding the Mangal Nalanda Buddha Vihara Project Initial Planning and Committee Formation On Saturday, Mangsir 14, 2076 B.S. (November 30, 2019), the Nepal Magar Budda Sewa Samaj, Province No. 5 Federal Council, convened a significant meeting. The session was chaired by Vice President Ms. Parbati Gharti Magar, with Mr. Gokarna Bahadur Kshetri, Chairperson of Kanchan Rural Municipality, serving as Chief Guest. This meeting formalized several critical preparatory steps: the naming of the management committee, the formation of an initial working committee, the selection of the land parcel, and the preliminary planning for the construction of the Mangal Nalanda Buddha Vihara.

#### Key Resolutions (November 30, 2019):

- **Location Confirmation:** It was formally resolved that the Vihara would be constructed on the open grounds of the Dhaminatal Community Forest Users Group, situated in Tallo Asnaiya, Ward No. 4, Kanchan Rural Municipality, Rupandehi.
- **Name of Management Body:** The official name for the monastery's management was unanimously agreed upon as the: "Mangal Nalanda Buddha Vihara Religious Forest Users Management Committee, Kanchan-4, Rupandehi."
- **Project Scope:** The Nepal Magar Budda Sewa Samaj Federal Council, Kathmandu, subsequently passed a multi-party and multi-stakeholder resolution to execute the construction of the Vihara at an international level, including associated environmental initiatives.
- **Working Committee:** An 11-member new working committee was established under the leadership of Ms. Parbati Gharti Magar.

A subsequent meeting was conducted on Falgun 6, 2076 B.S. (February 18, 2020) at the Maitri Buddha Vihara in Gumba Tol, Kanchan Rural Municipality, Ward No. 3, chaired by the newly elected chairperson, Ms. Parbati Gharti Magar.

This meeting formally resolved to initiate official correspondence from the Nepal Magar Budda Sewa Samaj Federal Council, Kathmandu, confirming the intent to proceed with the construction of the international-level Mangal Nalanda Buddha Vihara and associated environmental projects on the designated open land of the Dhamina Tal Community Forest Users Group in Tallo Asnaiya, Kanchan-4, Rupandehi.

On Ashoj 15, 2077 B.S. (October 1, 2020), a authoritative step was taken during the 19th Annual General Assembly of the Rudrapur Dhaminatal Community Forest Users Group, held under the chairmanship of Mr. Jit Bahadur Kshetri.

A resolution 09 was officially passed referencing an earlier decision from the 14th Annual General Assembly (Chaitra 13, 2072 B.S. / March 26, 2016), formally and unanimously approved the transfer of the Block No. 6 Eastern Asnaiya open field area-a site long recognized and preserved by the Nepal Magar Association, Rudrapur Village Working Committee-to the Nepal Magar Budda Sewa Samaj, Central Committee. This transfer was explicitly authorized for the development of a Buddha Vihara as a religious and tourism site.

In the aftermath of these formal decisions, the Nepal Magar Budda Sewa Samaj has maintained proactive engagement, continually seeking expert advice and suggestions from a wide array of stakeholders, including: intellectuals, local representatives, forest user groups, political parties, legal experts, educationists, and all other concerned entities, in order to ensure the efficient implementation and successful completion of this project.

#### **Annex-1**



## **7.Phasewise Project Description**

The execution of this project is structured into three distinct phases. The initial focus of these phases will be on the development and construction of the necessary physical infrastructure, which is essential for realizing the comprehensive vision of the Mangal Nalanda Buddha Vihara.

### **Annex-2**

#### **7.1 Project Phase-I**

The initial phase will concentrate on the designated 5.12 hectares of land situated in Tallo Asnaiya, Ward No. 4, Kanchan Rural Municipality, Rupandehi District. The following foundational activities will be executed during this stage:

- Construction of the Main and Outer Entrance Gates of the Vihara complex.
- Implementation of a comprehensive tree plantation program.
- Zoning and demarcation of site blocks in accordance with the official project layout.
- Construction and installation of a central Buddha statue.
- Development of a pond.
- Creation of designated parking areas for motor vehicles and motorcycles.
- Erection of temporary structures (sheds) for immediate use.
- Construction of provisional residential buildings to accommodate the initial contingent of monks and nuns.

#### **7.2 Project Phase-II**

The second phase will advance the development with the construction of permanent, core facilities, including:

- Construction of a permanent Meditation Center.
- Development of the Main Assembly Hall.
- Construction of permanent residences for the monastic community (monks and nuns).
- Establishment of a dedicated Research Center to focus on the Magar language, culture, and Buddhist philosophy.
- Construction of Stupas (Chaityas).
- Development of Office rooms, small conference halls, and dedicated facilities for hosting national and international conferences and workshops.
- Construction of essential support structures, including the kitchen room, staff rooms, monk residences, gardens, and a guardhouse, alongside the preparation of three open plots reserved for future expansion.

### 7.3 Project Phase-III

Comprehensive Operationalization, the final stage of development, Phase III, will focus on the construction of the remaining facilities required to establish the fully structured, multi-purpose Nalanda Buddha Vihara. This phase will integrate essential community and educational services, including:

- **Social Welfare Facilities:** Establishment of a Senior Citizen Center (Old Age Home) and a dedicated Health Center.
- **Cultural and Heritage Preservation:** Construction of a Museum and Cultural Building specifically designed for the promotion of the Magar community's culture and heritage.
- **Educational and Training Infrastructure:** Development of a full School Building, comprehensive Library, Computer Training Center, and separate Dormitories for male and female students.
- **Hospitality and Administrative Services:** Construction of a Guesthouse, Delegate Hall and Rooms for distinguished visitors, and a Garden.
- **Community and Recreational Spaces:** Erection of an Open Meeting Hall, development of a dedicated Sports Ground, and the demarcation of Allocated Land Plots intended for use by the Magar community.

## 8. Project Activities

The project activities will be carried out in phases as follows

S.N.	Types of Project	Project Description	Time frame
1.	Phase-I	1.Entrance Gate- In 2.Entrance gate -Out 3.Tree Plantation 4.Maintenance of Existing Tahara 5.Garden 6.Buddha Statue 7.Pond 8.Car and Bike Parking	2083-2085 1-3 years
2.	Phase-II	1.Office Room 2.Monks residence 3.Garden 4.Gurad House 5.Multi-purpose Hall foundation 6.Kitchen dining and Staff room 7.Spiritual garden 8.Mini conference Hall 9.Chaite 10.Three extra Plot 11.Chautara	4-7 years
3.	Phase-III & Final	1.Meeting hall 2.Kriyaputri Building 3.Main Bihar Building 4.Multipurpose Building 5.Guest House 6.Old people home 7.Student hostel ladies and gents 8.School Building and Play Ground 9.Symbol of Magar Samaj (Including magar Design house) 10.Plot of Magar Samaj 11.Vip Delegate Hall 12.Vip Delegate rooms 13.Health care centre 14.Computer training centre	7-10 years

## **9.Target Groups**

- Local residents (directly benefitting from employment and income opportunities).
- National and international tourists, donor agencies, and the Magar diaspora.
- University researchers, scholars, and academicians.
- Followers of Buddhism and Buddhists.
- Monks and nuns.
- Monk and nun students studying Pariyatti education.
- Elderly, helpless, and underprivileged groups (receiving support through social service programs).

## **10.Expected Results**

- Contribution to employment, education, and eco-tourism at the local level.
- Recognition and empowerment of Magar Buddhists at the national and international levels.
- Revival of Buddhist philosophy, education, and culture within the Magar community.
- Promotion of eco-tourism through the construction of a permanent structure for Mangal Nalanda Buddha Vihara.

## **11.Implementing Strategy**

- Collaboration with federal, provincial, and local governments.
- Partnerships with national and international donor agencies.
- Active participation of the community, volunteers, and the Magar diaspora.
- Sustainable resource management (through donations, contributions, government aid, and tourism revenue).

## **12.Environmental impact**

Since the construction of Mangal Nalanda Buddha Vihara in the Rupandehi area can be carried out in an environmentally friendly manner, this project will prove to be supportive. Along with the construction of the vihara, initiatives such as tree plantation programs, development of green spaces, rainwater harvesting systems, aesthetic ponds, and open parking areas will promote the conservation of natural resources and environmental balance.

Local communities will be involved in environmental awareness, tree preservation, cleanliness, and green expansion, which will strengthen the community's environmental responsibility. Additionally, since Buddhism itself emphasizes nature conservation and non-violence, the project will align with those core values.

Since the establishment of the vihara will be environmentally sustainable, spiritually sacred, and culturally significant, it will make a meaningful contribution in all these aspects.

### 13.Financial Sources

This project will be funded through support from national and international donor agencies, local, provincial, and federal governments, Buddhist organizations, the Magar diaspora, and devotees and well-wishers.

### 14. Estimated Budget

Estimated budget for the initial activities of the first phase

S.N	Description	Details	Estimated cost( in NRs.)
1	Main Monastery Entrance Gate and Outer Gate	Annex-3	26,84,031.00
2	Construction of Buddha Statue	Annex-3	18,07,697.00
3	Area/Block Determination		Annex-3 & 4
4	Tree Plantation Program		Annex-3 & 4
5	Construction of Pond		Annex-3 & 4
6	Car Parking Area Construction		Annex-3 & 4
7	Motorcycle Parking Area Construction		Annex-3 & 4
8	Temporary Structures (Sheds)		Annex-3 & 4
9	Initial Accommodation for Monks and Nuns		Annex-3 & 4
<b>Total estimated cost</b>			<b>44,91,728</b>

Note: Budget for the second phase will be prepared in the third year and for the final phase will be prepared in the sixth year.

**Annex-3 & 4**

### 15.Responsible Persons of the Project

Nepal Magar Buddha Sewa Samaj – Central Committee – Chairperson

Nalanda Buddha Vihar Committee – Chairperson

Nalanda Buddha Vihar Construction Committee – Chairperson

**Note:**For the successful completion of this project, the Nepal Magar Budda Sewa Samaj (Central Committee) will play the key role at the national and international levels, while the Nalanda Buddha Vihar Committee and the Construction Committee will play the main roles at the provincial and local levels.

## 16. Monitoring and Evaluation

*Semi-annual evaluation:* A six-month progress report aligned with project objectives.

*Annual evaluation:* A one-year progress report based on the project goals.

*Mid-term evaluation:* A progress report after 2 years and 6 months of implementation, measuring achievements against the objectives.

The executive committee of the project will determine and officially document the detailed timelines for these evaluations. Projected results after full completion of the project

## 17. Achievements after completion of the Project

### Long-term Outcomes:

- Collaboration with local schools will contribute to developing curricula related to Buddhist philosophy and culture.
- The protection and global promotion of Dhamma and culture will be ensured.
- Social services related to the monastery (such as health camps, educational support, and disaster management) will be regularized.
- A Buddhist monastery, study and research center, and a cultural faith center will be established at the provincial level.
- It will contribute to the promotion and development of travel and eco-tourism.
- Through international cooperation, Mangal Nalanda Buddha Vihar will be established as a center for Buddhist and cultural studies.
- Buddha Jayanti, Dhamma Chakra Pravartan Day, meditation retreats, and cultural programs will be conducted.
- Construction and development of the monastery, worship activities, and daily Dhamma practices will be regularized.

## 18. Conclusion

The construction of the Mangal Nalanda Buddha Vihara Project in Rupandehi represents not only a religious and cultural revival for the community but also a direct contribution to local economic and social development.

This project will promote religious tourism, thereby creating employment opportunities; it will also develop environmentally friendly infrastructure through programs such as tree plantation and pond construction. Furthermore, it will spread Buddhist philosophy and values among the new generation through educational and meditation centers.

Thus, this project is poised to become a symbol of peace, inclusiveness, and sustainability, not only for the Magar community but for the entire nation of Nepal.

## **19.Contact details**

### **Central Level**

Contact Person: Chairperson, Captain Deo Bahadur Rana  
Chairperson, Nepal Magar Buddha Sewa Samaj – Central Committee  
Email: [Deo66740@gmail.com](mailto:Deo66740@gmail.com)  
Mobile: +977 9851098064

### **Provincial and Local Level**

Contact Person: Parbati Ghartimagar  
President, Mangal Nalanda Buddha Vihar Committee & Construction Committee  
Kanchan Gaunpalika Ward no. 3, Rupandehi  
Mobile: +977 9847141035

## **20.Bank Details**

### **1.Nepal Magar Buddha Sewa Samaj**

Nepal Bank Limited, Jawalakhel Branch, Lalitpur  
Account No.: 191001001758000001

### **2. Nepal Magar Buddha Sewa Samaj**

Krishi Vikas Bank Ltd., Butwal Branch, Rupandehi  
Account No.: 04-148-01201453-01-6

### **3. Mangal Nalanda Buddha Vihar Construction Committee**

Muktinath Bikas Bank Ltd., Haraiya Branch, Rupandehi  
Account No.: 10610200864960000001

## **21.Annexes:**

Annex 1: Meeting /Disussions/Decisions

Annex 2: Engineering Design/Map

Annex 3: Engineering Design/Map,Phase-I

Annex-4: Budget Estimate,Phase-I



[illegible]

संक्षेपः

[illegible]







प्रस्तावः -

- १- मंगल नालन्दा पुद्गु विहार (कोलाहि) अमित शर्मा एवं निर्माण सम्बन्धमा ।
- २- सामाजिक नालन्दा सम्बन्धमा ।
- ३- कार्य समितिको गठन सम्बन्धमा ।
- ४- कार्य समितिको सम्बन्धमा ।
- ५- डिभिजनल कार्य समितिको डेलिगेट्स गर्ने ।
- ६- कार्य समितिको विवरण ।

नि.ने. १- प्रस्ताव नं. १ माथि छलफल गरी छपन्देही जिल्ला कुम्भार गाउँपालिका वडा नं. ४ तल्ला अस्नेया स्थित धामिनाथाल सामुदायिक वन उपमैला समितिको (कुल्ला चौर) एवं नेपाल मातृ संघ कुम्भार गाउँ सामितिको संस्थागत समितिको नेपाल मातृ संघ पुद्गु सेवा समाज ईवीए बरिबर्द काठमाडौंले अन्तरसार्थक स्तरको मंगल नालन्दा, पुद्गु विहार निर्माण गर्ने समितिको गठन गरीएको छुट्टा सो पुद्गु विहार निर्माण गरीने भगवान पुद्गुको शान्तिको, सन्देशले धर्म क्षेत्रमा शान्ति फैलिनुको साथै धार्मिक पर्यटनको, विकासको, साथै भक्त क्षेत्रमा बहोकात्तु गर्ने अन्तर्गतको, सामाजिक, धार्मिक, सांस्कृतिक एवं आर्थिक प्रथमा विकास हुने भएकाले आजको लक्ष्यदाले, एवं पश्चिम, अन्तर्गतको एवं पुद्गुसितिको भेलाबाट सो स्थानमा लार्वा एवं मंगल नालन्दा पुद्गु विहारको शक्ति निर्माण गर्ने साथै सो स्थानमा (हेको पुद्गु एडको) संस्थागत गर्दै खाली रहेको स्थानमा पुद्गु विहार रोड र आउछुट्टा गरीनेको निर्माण गर्ने आगे निर्णय सर्व सम्मलले पारित गरियो ।

नि.ने. २- प्रस्ताव नं. २ माथि छलफल गरी छपन्देही जिल्ला कुम्भार गाउँपालिका वडा नं. ४ तल्ला अस्नेया स्थित (कुल्ला चौर) मा निर्माण गरिने मंगल नालन्दा पुद्गु विहारको नयाँ मंगल नालन्दा, पुद्गु विहार धार्मिक वन उपमैला, व्यवस्थापन समिति, कुम्भार-४ छपन्देही राखिने निर्णय सर्व सम्मलले पारित गरियो ।

नि.ने. ३- प्रस्ताव नं. ३ माथि छलफल गरी छपन्देही जिल्ला कुम्भार गाउँपालिका वडा नं. ४ तल्ला अस्नेयाको (कुल्ला चौर) मा निर्माण गरिने मंगल नालन्दा पुद्गु विहारको निर्माण कार्य एवं सम्पूर्ण कार्य समितिको गठन गर्ने कार्य समितिको कार्य समिति २०१९/११/३० १६:३०



निर्णय सर्व सामान्ये कश्चित् कश्चित् ।  
उपस्थिते

- [illegible]

सर्व कार्यको गेजले स्पष्टिले अनुमात्र (3) सल्लाहका (सामिति-चयन गरियो)  
सल्लाहका (२५):-

- १- श्री गोविन्द बहादुर (नामिछाने)
- २- श्री दुर्गा सिंह (कोश)
- ३- श्री इंदुल बहादुर (धाक)
- ४- श्री विष्णु नारायण श्रेष्ठ
- ५- श्री मीता थापाभा. (द.) इन्द्र

निर्गयेने ४ प्रस्तावने ४ भाषि हूलमल गरी भंगल नीनन्द। बाहु  
विहा धामिडे वन उपमेल। व्यवस्थापन समिति लाई बाहु  
विहा निर्माण, वृक्ष रोपण लगायतडा कापे सप्यादनके लपि  
प्राप्तको भेलाले जिम्मा दिने निर्णय सर्व समतल पारित  
गारियो।

नि. नं. ५- प्रस्ताव नं. ५ माथि दलपल गरी कयनेही मिल्ला  
कंचन गा.पा. वडा नं. ६ तल्लो अमन्या को लुब्ध  
चौदमा मंगल तालन्दा पूर्व विद्या निमोन तथा ताल्पा  
गन ए वृक्ष होपना गनको लागि माथि उल्लेखित कार्य  
समिति, गाउँपालिका, कंचन क, आध्यक्ष स गोकर्ण कडा  
को वडा नं. ५, आध्यक्ष स गोकर्ण कडा  
सहित मिडिया डिभिजन वन कार्यालय



अथनेही मा भूयः डेलिगेराय गहू परामर्शे गने भने  
निर्णय सर्व समतले पारित गरियो ।  
नि.क. ६ - प्रस्ताव नं. ६ माथि छलफल गरी सा प्रपन्नेही  
मिल्ला छैन ६ मल्ला अल्पमात्रे पुल्का गरि मा  
वोई विद्या निर्माण गर्ने प्रयोजन को लागि यसभाषी  
विनाई कुम्पु पुर्न अर्को संयोजकत्वमा गदित काम  
दल आमन्त्रा पितिराट विद्यार्थ भएकु निर्णय  
सर्व समतले पारित गरियो । साथै सो सम्बन्ध  
सो सामेलिने गतेकु सर्व निर्णयई छलफल गरि मा  
निर्णय सर्व समतले पारित गरियो ।  
आजको भेलो एवं कार्यक्रमा छलफल कार्यक्रम सार्व, ई प्रार्  
६ पमा सम्पन्न भयो ।

[illegible]







१. कौटुम्बिक निर्माण समन्वयना

२. निर्माण

निर्णय

प्रस्ताव नं. १ माथि हलफल गरी कौटुम्बिक (धर्मनाथल सामुदायिक वन उपमोह) समूहको पूर्व भर्खा, वन नं. ६३० हाली चौदमा अन्तर्गतस्थित स्तरको कौटुम्बिक निर्माण गर्ने सामुदायिक वन उपमोह, समूहको मिति २०७३/१२/१३ गते का दिन चौदमा 'समावेश' समाकाट एवं सम्मलेन निर्णय पारित गरिएको हुँदा सो स्थानमा मैगल जालन्दा, कौटुम्बिकको शुद्ध योजना अनुसार कौटुम्बिक निर्माणको कार्यन्वयन गर्ने र हाली ६३०मा लेन लैनेछा एवं वृक्ष रोपण गरी नेपाल मातृ कौटुम्बिक समाज केन्द्रिय समिति काठमाडौंलाई अनुरोध गर्ने भन्ने निर्णय एवं लागू पारित गरियो।

प्रस्ताव नं. २ माथि हलफल गरी कार्य शुद्ध गर्नेको लागि पञ्चाशद्विषय पञ्चाया गर्ने भन्ने निर्णय पारित गरियो।

SHOT ON REDMI NOTE 5  
MI DUAL CAMERA

2020/2/18 18:



3

आज मिति २०७७/०६/१५ गते मध्य श्री हर्ष सहपुर्वागमितालाय-सामुदायिक  
 वन उपभोक्त-समूह कठपत-३२६ सपदेवीको वड श्री कार्पिड-सामाज्य  
 सभा उपभोक्त गीला सय्य सामुदायिक वन प्राप्ति ला सामाजिक डामन  
 श्री जित बहापुर शैजी ज्यूको अध्यक्षतामा, चिपगरी मसगरीको रूपमा  
 निर्माणको तयारीमा आइरह्य (COVA-19) लाई मसगरी जोई सामा-  
 जिब दूरी-काममा जारी सुरक्षित तरहे निर्गत प्रस्तावहरू माथि कनफ्रन्स  
 गरी गेला। तस। अनुमोदन गरी वड श्री कार्पिड-सामाज्य सभा तथा उपभोक्त  
 गीला कार्यालय सम्पन्न गरियो ।

हपारिभन

- अध्यक्ष :- जित बहापुर शैजी *Ym*
- आयक्ष :- आडर जोईला *(21)*
- सचिव :- पार्वती घर्तिमगर *(21)*
- सह सचिव :- रत्न बहापुर शैजी *अध्यक्ष*
- कोषाध्यक्ष :- खोप बहापुर मगर *1400*
- सदस्य :- मिता मसगरी *(21)*
- " :- सुफमाया दाजि *(21)*
- " :- डेवी पारियाट *देवी पारियाट*
- " :- विनीत कुमार छडाल *छडाल*
- " :- यम बहापुर थापा *थापा*
- " :- जित अरुतागरी *जित*
- पटिना-सदस्य :- हव बहापुर पारियाट *पारियाट*
- " :- कुता बहापुर राजबोरी *(21)*

समिति सल्लाहकार

- यम बहापुर शैजी *Ym*
- गुरुव थापा मगर *(21)*
- अंग बहापुर कुवर *"*
- जिताराग खनाल *(21)*
- बोर बहापुर राना *(21)*
- यम बहापुर राना *(21)*



9396.	मिना लक्ष्मी	Lila Thapa
9397.	चन्द्र लक्ष्मी	Chandra
9398.	जगत राना	Jagat Rana
4/5 9399.	हृषीकेश पौडेल	Hrishikesh Paudel
9400.	गणेश पौडेल	Ganesh Paudel
9401.	मिना लक्ष्मी	Minna Lakshmi
9402.	हिमा देवी आचार्य	Hima Devi Acharya
9403.	रमेश राणा	Ramesh Rana
9404.	विमानन्द आचार्य	Vimanand Acharya
9405.	हरिनाथ पौडेल	Hari Nath Paudel
9406.	मिना लक्ष्मी	Minna Lakshmi
9407.	मोती प्रसाद पौडेल	Moti Prasad Paudel
9408.	रमेश पौडेल	Ramesh Paudel
9409.	शान्ता सुता	Shanta Suta
9410.	विष्णु वि०६०	Vishnu V. 60

### प्रस्तावहरू

१. भा.व. २०६६/०६६ को क्षेत्राधिकार प्रलियेकन अनुमोदन सम्बन्धमा
२. भा.व. २०६६/०६६ को अनुमानित आर्थिक व्यय तथा प्रस्तावित कार्यक्रम अनुमोदन गर्ने सम्बन्धमा
३. दिगो/वेबसाइट वन व्यवस्थापन कार्ययोजना कार्यान्वयनका लागि अनुमोदन गर्ने सम्बन्धमा
४. वन विभाग स्वरूप तथा व्यवस्थापन कार्य सम्बन्धमा
५. दफान तथा करानमुहान कार्य सम्बन्धमा
६. कार्यालय भवन भर्तस्वाम्यार सम्बन्धमा
७. पर्यटकीय तथा धार्मिक स्थल विकास सम्बन्धमा ।
८. पूरक कार्ययोजना कार्य तथा अस्तिम व्यक्तिगत जिम्मा रकम सम्बन्धमा
९. क्षेत्रीय निर्माण सम्बन्धमा ।
१०. खम्बुको उर्मचारीको तलाय सम्बन्धमा ।
११. विविध सम्बन्धमा ।

*[Signature]*





प्रमुख अतिथि - कृष्ण गोर्खा जोङ्गली शेर्पा  
 विधिगत अतिथि - सायुजायित वन उपजोला महापंथ, सपथेरी ३/३/७५  
 विशेष अतिथि - दिनात्मक आचार्य  
 विशेष अतिथि - कुञ्ज ग.पा. ३ तः ७५ अध्यापक नगेन्द्र लामिहारे  
 विशेष अतिथि - लुङ्गिनी व. वि. व. शर्मा, वन रम्य उत्पत्ताश्रम मादव

ने. कु.पा. कृष्ण ३ रूप राज (पेडेल) आर्मा  
 नेपाली कांग्रेस कृष्ण

राष्ट्रिय जनमोर्चा कृष्ण ग.पा. सल्लाहकार शिम बहादुर विजयार्ण  
 रा. जनमुक्ति पार्टी कृष्ण  
 रा. जनजाताक्रान्ति मोर्चा कृष्ण धन बाग सिन्धु

कृष्ण पक्ष  
 कृष्ण ग.पा. ३ तः ७५ सपथेरी - निवाधर जोङ्गली  
 कृष्ण ग.पा. ३ तः ७५ सपथेरी - कुमारी गहलराज  
 ०३ ०३ ७५ - माधवी शर्मा  
 सायुजायित वन ३० सपथेरी - पवित्र थापा मजाल

रुद्रपुर या व. उ. समूह - नाम व. उ. व. (समूह)  
 नव दुर्गा या व. उ. समूह - सिम्बनाथ मन्दिर  
 गौरीताल या व. उ. समूह - सन्निव वनस्थित टम्रादि पाठ  
 रेचबान या व. उ. समूह - सन्निव वनस्थित टम्रादि पाठ

रुद्रपुर धर्मिताल या व. उ. समूहका र्थ अधिका र्थ ३ बहादुर पुन

कौटिल्य खड्ग तर्पकट  
 तैज नारायण शर्मा  
 पिनो ० कुमारा पुन

संस्थापक सचिव देश जमायप कौटिल्य

अध्यापक सचिव जेष्ठ प्रमाणपुर  
 सा. बा. व. वि. वि.

प्रमुख



केन्द्रीय मन्दिर स्मारोत्सविका लागि आगस्ट २३ गते विनिर्माण गर्न भन्ने कार्य १५ अर्ब ३० करोड भन्ने अनुमान गरिएको छ ।

पि.नं. १ - ७.१.१ मा हलफल गर्दा यस समूह सामुदायिक वन उपभोक्ता समूहको पंचो कार्यसमिति (२०६५-०६६) द्वारा सामुदायिक वन पुरव्व कार्य योजना तयार गर्दा खर्च भएको तर वितामरपार्सदको प्राप्त नगरको हुने प्रत्येक सालको लेखा परिक्षण प्रतिवेदनमा अलिग भोजनमा रहेको आएको हुने उक्त प्रवृत्त कार्यसमिति विर्गु २३ गते ४३.०००१. (अक्षरणी उपपचास हजा रूपैया) तथा व्यक्तिगत जिम्मामा रहेको रकम रु. ८८९८१. (अक्षरणी आठ हजा आठ सय अठार रूपैया) को कारिसंग करि २३ गते भन्ने लिखित आगजात लेखा प्रतिवेदनमा समेत अडित नगरको हुने खो सम्म विर्गु २३ गते आ.व. २०७७/०७८ बाट हराउने निर्णयलाई सर्व सहमतिले यस १५ अर्ब ३० करोड बाडिब्याधारण समिति तथा उपभोक्ता भेला भन्ने छान्ने अनुमान गरिएको छ ।

पि.नं. २ - ७.१.२ मापि हलफल गर्दा यस समूह सामुदायिक वन उपभोक्ता समूहको मिति २०७२/१२/१३ गतेको १४ अर्ब ३० करोड बाडिब्याधारण समिति तथा उपभोक्ता भेलामा समूहको वन क्षेत्र हराउने ६ अर्ब ३० करोडको खाली पौरमा नेपाल मगर संघ समूहको कार्य समितिले विगत लामो समय देखि चर्चिदै र खर्च गर्न आएको स्थानमा वन सरकारीको लगातीमा बुझ्न विहार वनाउने भन्ने निर्णय अनुमान गरिएको तर हाल सम्म खो स्थानमा वन सरकारीको विहार समिति नबनाएको हुने उक्त स्थानमा

*(Signature)*



निर्णय नं. १० - ७.१.१० मा हलफल गरी यस यसूह कुर्सचारीको हलको  
तलमा कार्यालय खुलियो २०% ले घुटि गर्ने तथा कार्यालय  
घरको गी २ वहेरालुको तलमा १२% घुटि गर्ने गरी चालु  
आ. व. को डाटिड महिनाबाट लागु गर्ने निर्णय यस अनायास  
घरघरमा भन्नुपर्ने गरी यो ।

निर्णय नं. ११ - ५ नं. ११ विविध समसंस्था महास्पर्धा निर्णय बैठकीत एक इतर  
 भाषाको सहजपुर धामिनाता सा. व. उ. समुहको १३ औं वाषिर्  
 साधारण सभा तथा उपमोला भेला जोरोला भाइस्य (COFFED-१५)  
 लाई महानगर गेट सभाजि दुई कायम गरी सुरक्षाका  
 समुहको अपनाउदै सौहार्दपूर्ण वातावरणमा सम्पन्न गरियो ।

216718  
 Ghamelati  
 Sonam  
 दिवा भावा  
 सुरज  
 216718  
 Ghamelati  
 Sonam  
 दिवा भावा  
 सुरज  
 216718  
 Ghamelati  
 Sonam  
 दिवा भावा  
 सुरज

Mangal Nalanda Buddha Bihar

Rudrapur, Rupandehi, Lumbini



Architectural Drawing

Owner:

Mangal Nalanda Buddha Bihar  
Rudrapur, Rupandehi, Lumbini

June, 2025

Designed By:

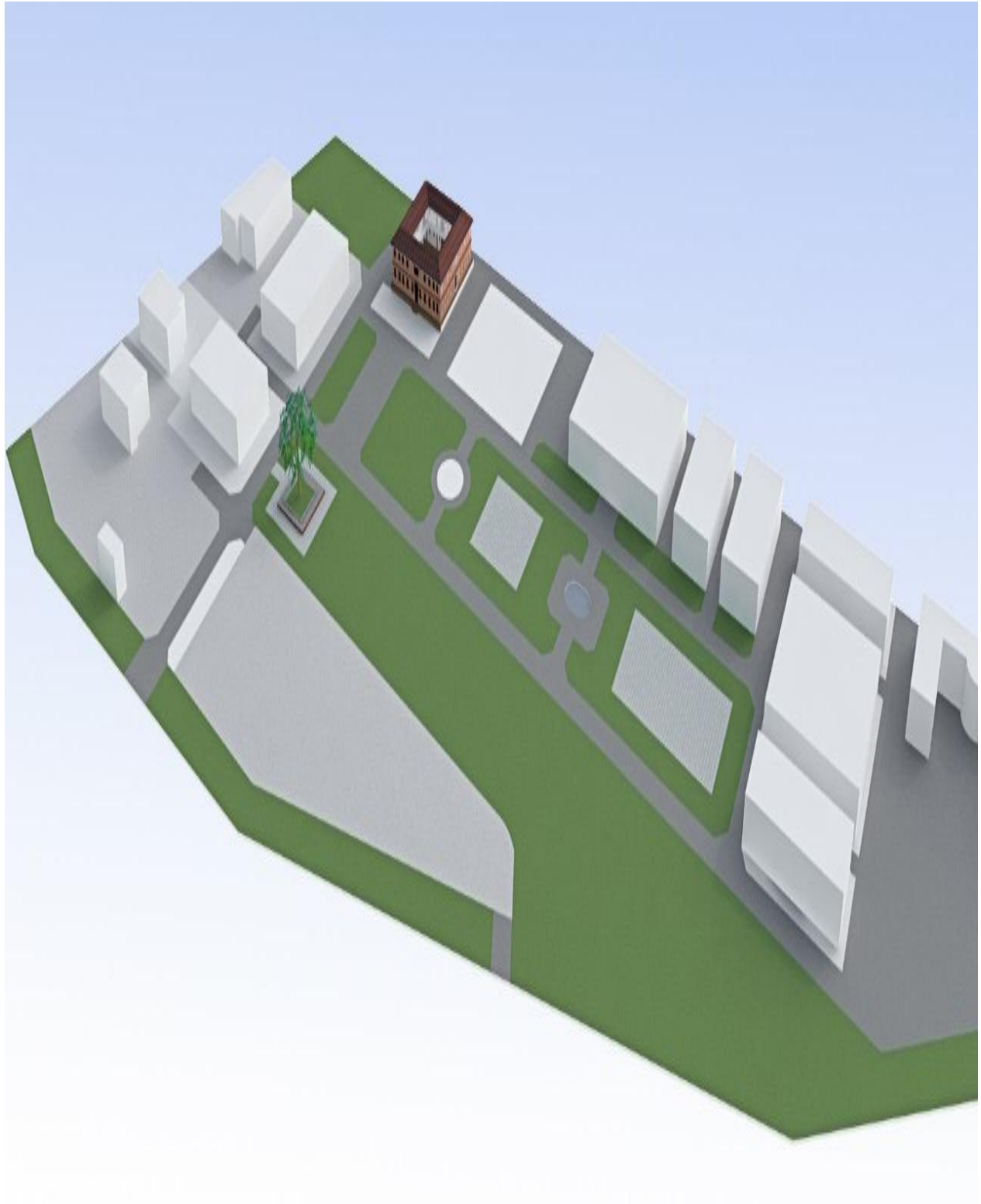


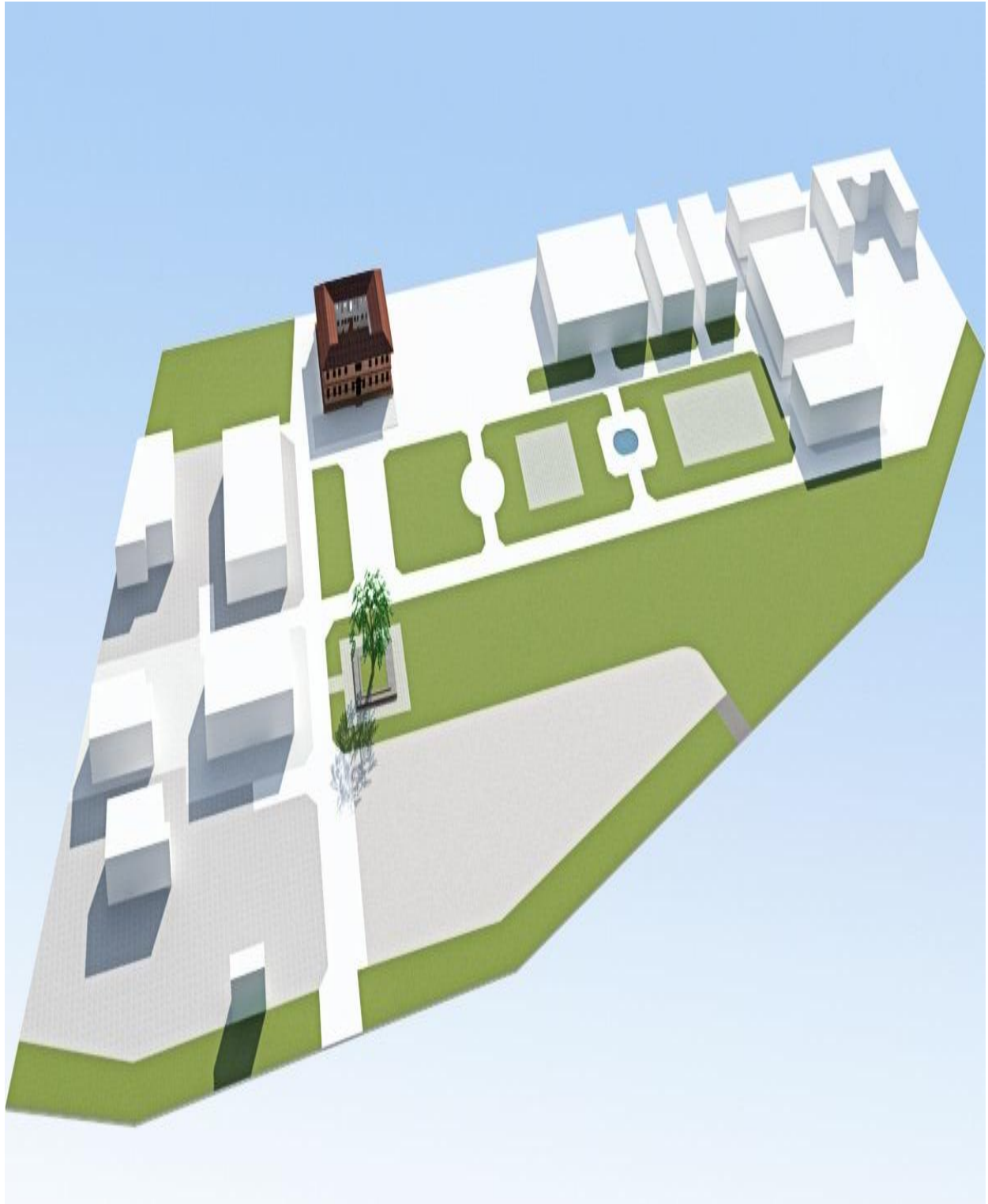
SIDDHARTHA DESIGNERS (Pvt) Ltd.  
Jawalakhet, Lalitpur  
Tel: 01-5430608





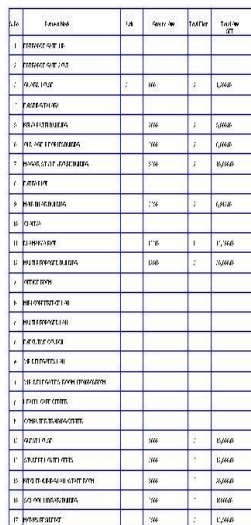
27 | Page



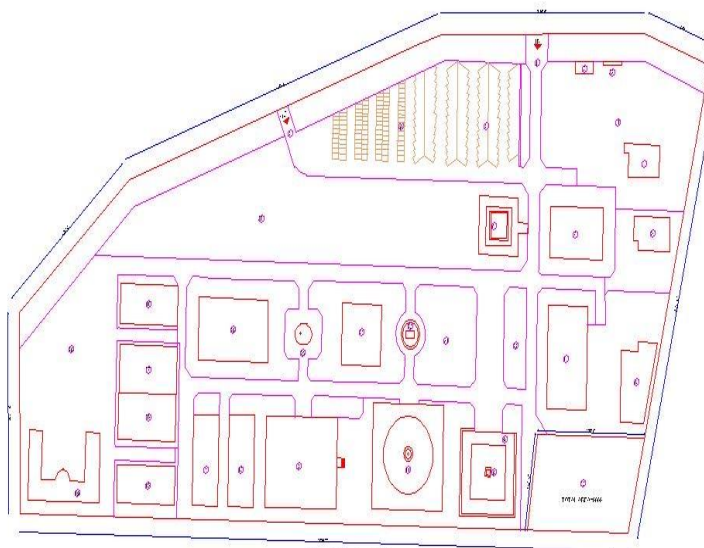






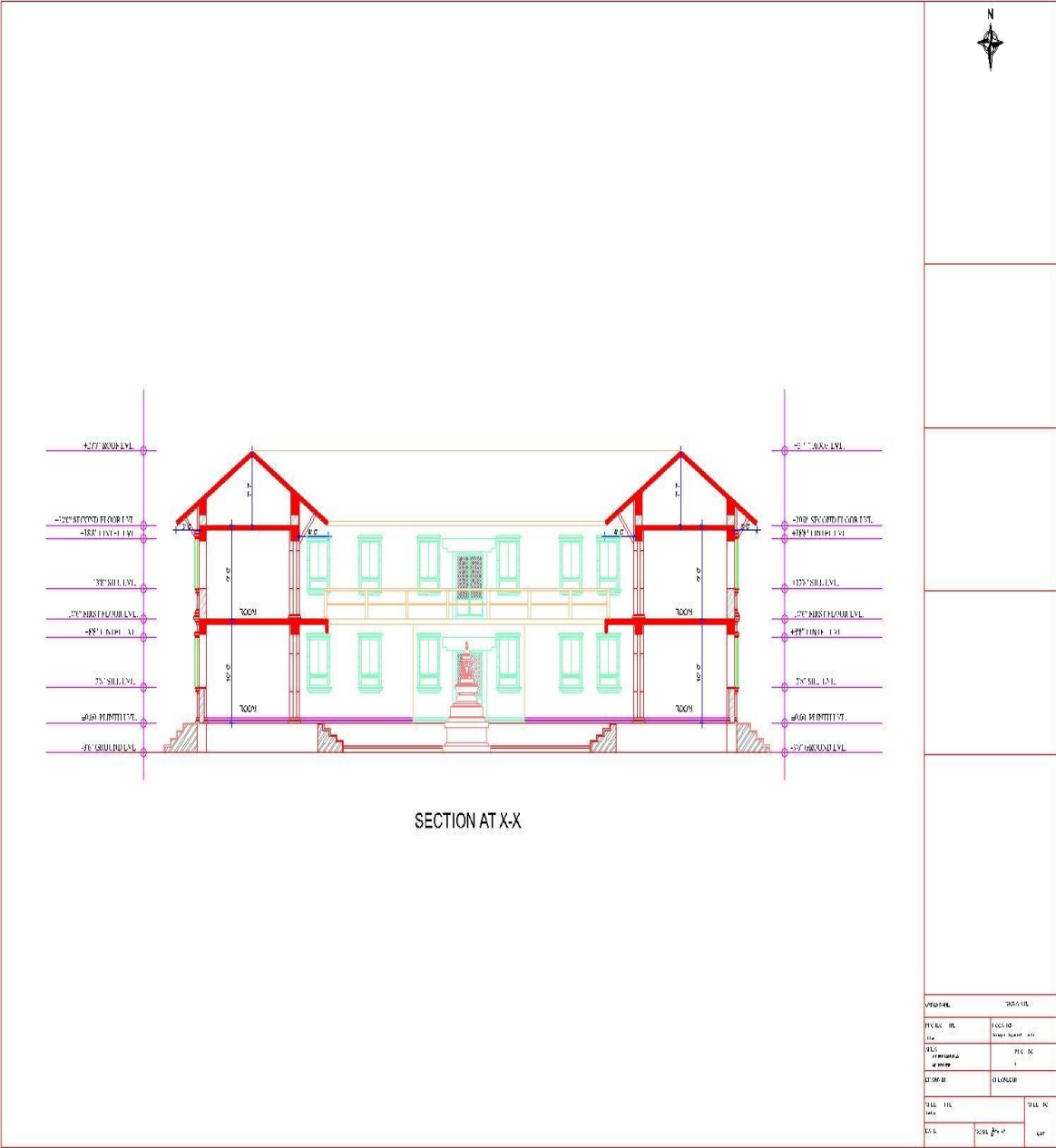


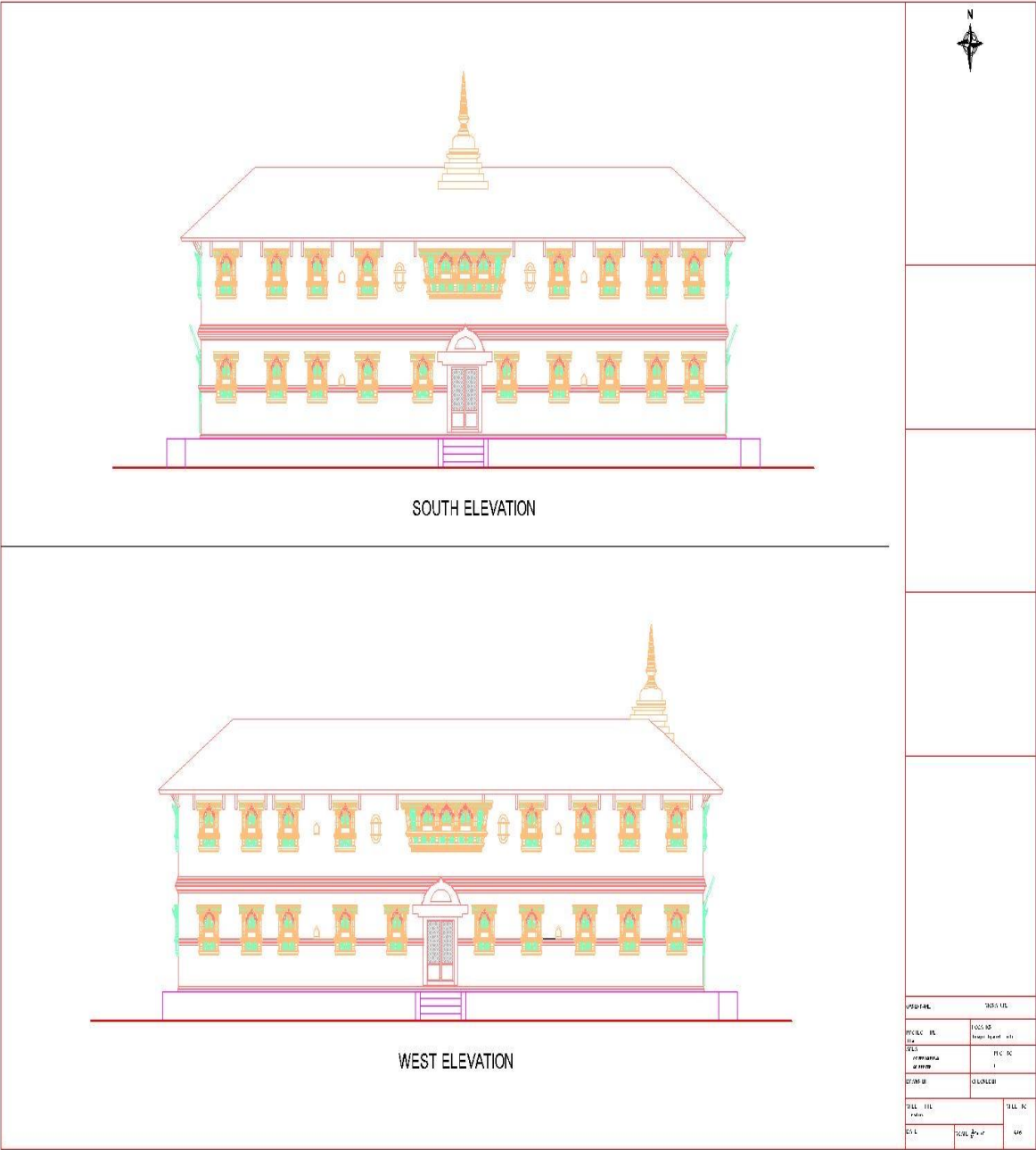
9	2017年11月15日		200	1	无异常
10	2017年11月22日		200	1	无异常
11	2017年12月1日				
12	2018年1月5日				
13	2018年1月12日				
14	2018年1月19日				
15	2018年1月26日				
16	2018年2月2日				
17	2018年2月9日				
18	2018年2月16日				
19	2018年2月23日				
20	2018年2月28日				
21	2018年3月6日				
22	2018年3月13日		200	1	无异常
23	2018年3月20日				
24	2018年3月27日				

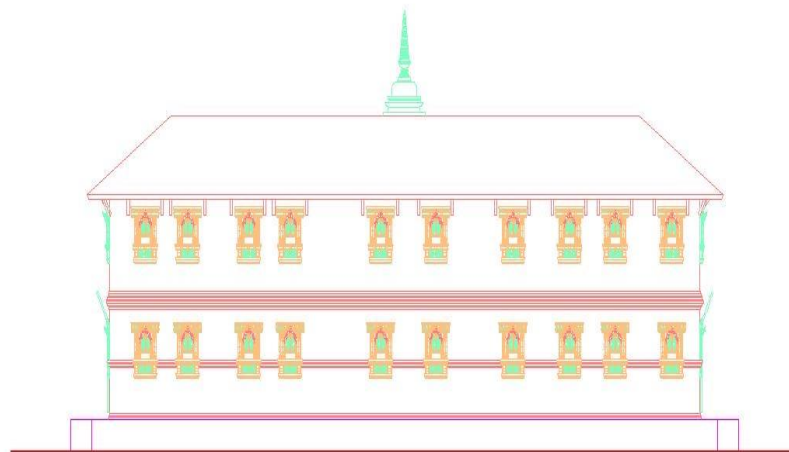
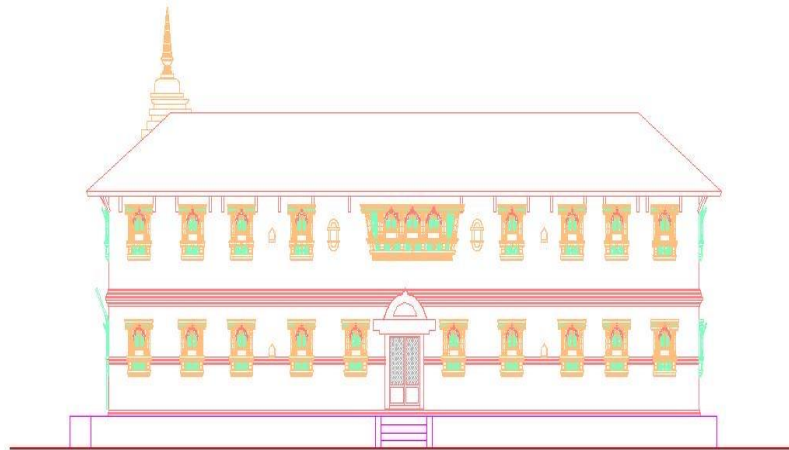


## SITE PLAN

PROJECT NAME		SCHEDULE	
PROJECT TYPE	LOCATION	Design Department	
DATE	PLANT NO.	1	
DATE WHEN	CHECKED BY		
SHEET NO.		SHEET NO.	
DATE	SCALE / 1:200	A-1	

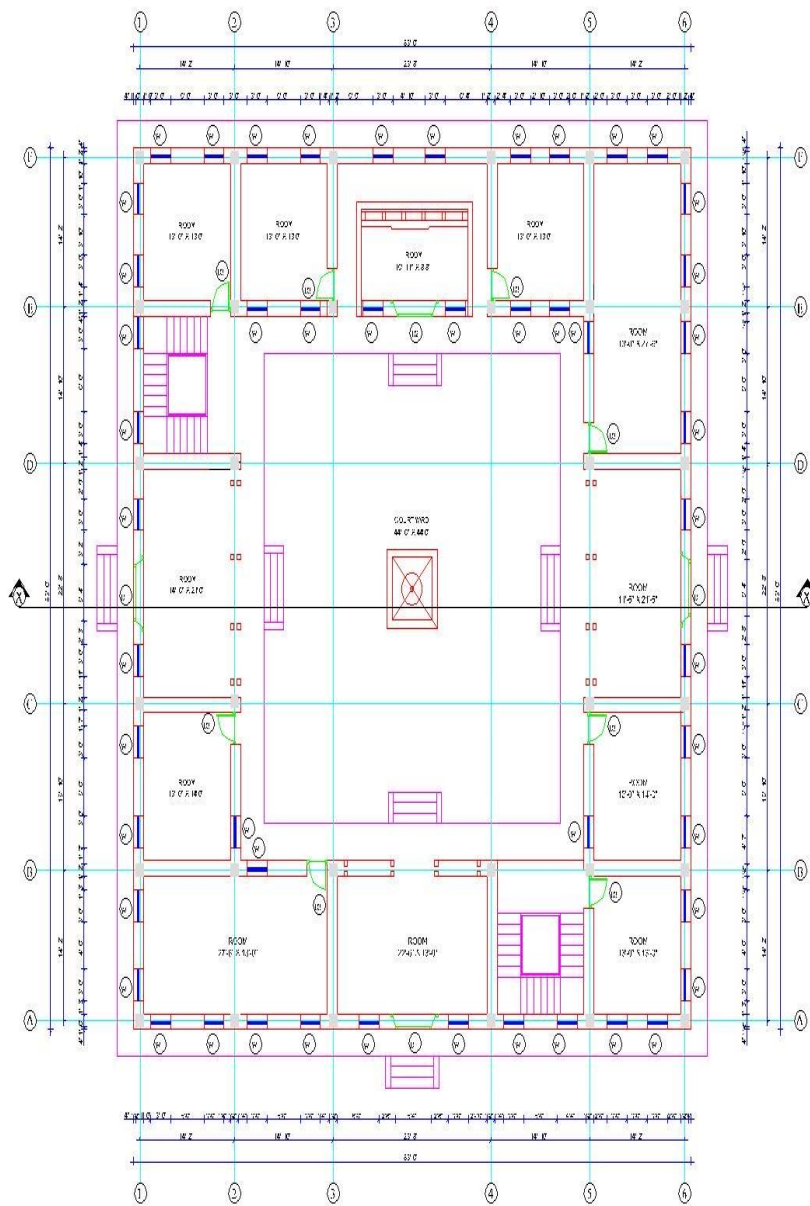




[illegible]



PFCs C-URL		PFCs C-URL	
PFCs C-URL		PFCs C-URL	
11a		11a	
11b		11b	
11c		11c	
11d		11d	
11e		11e	
11f		11f	
11g		11g	
11h		11h	
11i		11i	
11j		11j	
11k		11k	
11l		11l	
11m		11m	
11n		11n	
11o		11o	
11p		11p	
11q		11q	
11r		11r	
11s		11s	
11t		11t	
11u		11u	
11v		11v	
11w		11w	
11x		11x	
11y		11y	
11z		11z	

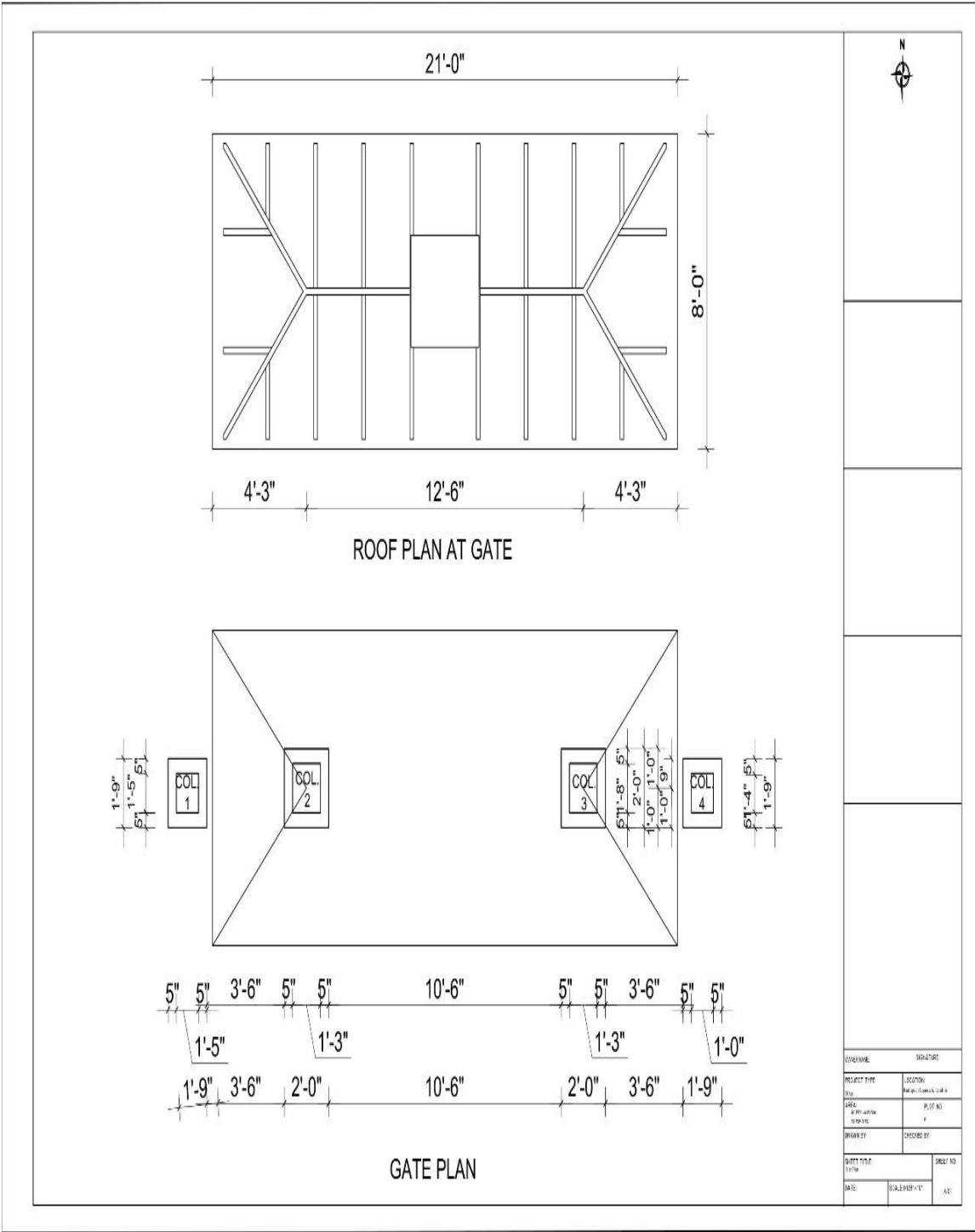


APPLICANT		TAXES DUE	
PUBLIC USE	LOCAL USE	TAXES PAID	
11a	11b	11c	
11d	11e	11f	
11g		11h	
11i		11j	
11k		11l	
11m		11n	
11o		11p	
11q		11r	
11s		11t	
11u		11v	
11w		11x	
11y		11z	
11aa		11ab	
11ac		11ad	
11ae		11af	
11ag		11ah	
11ai		11aj	
11ak		11al	
11am		11an	
11ao		11ap	
11aq		11ar	
11as		11at	
11au		11av	
11aw		11ax	
11ay		11az	
11ba		11bb	
11bc		11bd	
11be		11bf	
11bg		11bh	
11bi		11bj	
11bk		11bl	
11bm		11bn	
11bo		11bp	
11bq		11br	
11bs		11bt	
11bu		11bv	
11bw		11bx	
11by		11bz	
11ca		11cb	
11cc		11cd	
11ce		11cf	
11cg		11ch	
11ci		11cj	
11ck		11cl	
11cm		11cn	
11co		11cp	
11cq		11cr	
11cs		11ct	
11cu		11cv	
11cw		11cx	
11cy		11cz	
11da		11db	
11dc		11dd	
11de		11df	
11dg		11dh	
11di		11dj	
11dk		11dl	
11dm		11dn	
11do		11dp	
11dq		11dr	
11ds		11dt	
11du		11dv	
11dw		11dx	
11dy		11dz	
11ea		11eb	
11ec		11ed	
11ee		11ef	
11eg		11eh	
11ei		11ej	
11ek		11el	
11em		11en	
11eo		11ep	
11eq		11er	
11es		11et	
11eu		11ev	
11ew		11ex	
11ey		11ez	
11fa		11fb	
11fc		11fd	
11fe		11ff	
11fg		11fh	
11fi		11fj	
11fk		11fl	
11fm		11fn	
11fo		11fp	
11fq		11fr	
11fs		11ft	
11fu		11fv	
11fw		11fx	
11fy		11fz	
11ga		11gb	
11gc		11gd	
11ge		11gf	
11gg		11gh	
11gi		11gj	
11gk		11gl	
11gm		11gn	
11go		11gp	
11gq		11gr	
11gs		11gt	
11gu		11gv	
11gw		11gx	
11gy		11gz	
11ha		11hb	
11hc		11hd	
11he		11hf	
11hg		11hh	
11hi		11hj	
11hk		11hl	
11hm		11hn	
11ho		11hp	
11hq		11hr	
11hs		11ht	
11hu		11hv	
11hw		11hx	
11hy		11hz	
11ia		11ib	
11ic		11id	
11ie		11if	
11ig		11ih	
11ii		11ij	
11ik		11il	
11im		11in	
11io		11ip	
11iq		11ir	
11is		11it	
11iu		11iv	
11iw		11ix	
11iy		11iz	
11ja		11jb	
11jc		11jd	
11je		11jf	
11jg		11jh	
11ji		11jj	
11jk		11jl	
11jm		11jn	
11jo		11jp	
11jq		11jr	
11js		11jt	
11ju		11jv	
11jw		11jx	
11jy		11jz	
11ka		11kb	
11kc		11kd	
11ke		11kf	
11kg		11kh	
11ki		11kj	
11kk		11kl	
11km		11kn	
11ko		11kp	
11kq		11kr	
11ks		11kt	
11ku		11kv	
11kw		11kx	
11ky		11kz	
11la		11lb	
11lc		11ld	
11le		11lf	
11lg		11lh	
11li		11lj	
11lk		11ll	
11lm		11ln	
11lo		11lp	
11lq		11lr	
11ls		11lt	
11lu		11lv	
11lw		11lx	
11ly		11ly	
11ma		11mb	
11mc		11md	
11me		11mf	
11mg		11mh	
11mi		11mj	
11mk		11ml	
11mm		11mn	
11mo		11mp	
11mq		11mr	
11ms		11mt	
11mu		11mv	
11mw		11mx	
11my		11my	
11na		11nb	
11nc		11nd	
11ne		11nf	
11ng		11nh	
11ni		11nj	
11nk		11nl	
11nm		11nn	
11no		11np	
11nq		11nr	
11ns		11nt	
11nu		11nv	
11nw		11nx	
11ny		11ny	
11oa		11ob	
11oc		11od	
11oe		11of	
11og		11oh	
11oi		11oj	
11ok		11ol	
11om		11on	
11oo		11op	
11oq		11or	
11os		11ot	
11ou		11ov	
11ow		11ox	
11oy		11oy	
11pa		11pb	
11pc		11pd	
11pe		11pf	
11pg		11ph	
11pi		11pj	
11pk		11pl	
11pm		11pn	
11po		11pp	
11pq		11pr	
11ps		11pt	
11pu		11pv	
11pw		11px	
11py		11py	
11qa		11qb	
11qc		11qd	
11qe		11qf	
11qg		11qh	
11qi		11qj	
11qk		11ql	
11qm		11qn	
11qo		11qp	
11qq		11qr	
11qs		11qt	
11qu		11qv	
11qw		11qx	
11qy		11qy	
11ra		11rb	
11rc		11rd	
11re		11rf	
11rg		11rh	
11ri		11rj	
11rk		11rl	
11rm		11rn	
11ro		11rp	
11rq		11rr	
11rs		11rt	
11ru		11rv	
11rw		11rx	
11ry		11ry	
11sa		11sb	
11sc		11sd	
11se		11sf	
11sg		11sh	
11si		11sj	
11sk		11sl	
11sm		11sn	
11so		11sp	
11sq		11sr	
11ss		11st	
11su		11sv	
11sw		11sx	
11sy		11sy	
11ta		11tb	
11tc		11td	
11te		11tf	
11tg		11th	
11ti		11tj	
11tk		11tl	
11tm		11tn	
11to		11tp	
11tq		11tr	
11ts		11tt	
11tu		11tv	
11tw		11tx	
11ty		11ty	
11ua		11ub	
11uc		11ud	
11ue		11uf	
11ug		11uh	
11ui		11uj	
11uk		11ul	
11um		11un	
11uo		11up	
11uq		11ur	
11us		11ut	
11uu		11uv	
11uw		11ux	
11uy		11uy	
11va		11vb	
11vc		11vd	
11ve		11vf	
11vg		11vh	
11vi		11vj	
11vk		11vl	
11vm		11vn	
11vo		11vp	
11vq		11vr	
11vs		11vt	
11vu		11vv	
11vw		11vx	
11vy		11vy	
11wa		11wb	
11wc		11wd	
11we		11wf	
11wg		11wh	
11wi		11wj	
11wk		11wl	
11wm		11wn	
11wo		11wp	
11wq		11wr	
11ws		11wt	
11wu		11wv	
11ww		11wx	
11wy		11wy	
11xa		11xb	
11xc		11xd	
11xe		11xf	
11xg		11xh	
11xi		11xj	
11xk		11xl	
11xm		11xn	
11xo		11xp	
11xq		11xr	
11xs		11xt	
11xu		11xv	
11xw		11xx	
11xy		11xy	
11ya		11yb	
11yc		11yd	
11ye		11yf	
11yg		11yh	
11yi		11yj	
11yk		11yl	
11ym		11yn	
11yo		11yp	
11yq		11yr	
11ys		11yt	
11yu		11yv	
11yw		11yx	
11yy		11yy	
11za		11zb	
11zc		11zd	
11ze		11zf	
11zg		11zh	
11zi		11zj	
11zk		11zl	
11zm		11zn	
11zo		11zp	
11zq		11zr	
11zs		11zt	
11zu		11zv	
11zw		11zx	
11zy		11zy	











DRAWING		SHEET NO.	
PROJECT TYPE	LOCATION		
DATE	BY		
SCALE	SHEET NO.		
SHEET TITLE		SHEET NO.	
DATE	SCALE	SHEET NO.	



Annex-4 First Phase Budget estimate

**DAKSHIN BARAHI BRICKS INDUSTRIES PVT. LTD.**  
**THIMI, DHADHIKOT**  
**PROJECT : MANGAL NALANDA BUDDHA VIHARA**  
**AT RUDRAPUR , RUPANDEHI (ENTRANCE GATE)**  
**CLIENT: NEPAL MAGAR BOUDHA SOCIETY**

S.NO	DESCRIPTION OF WORK'S	UNIT	QUANTITY	RATE	AMOUNT
<b>A</b>	<b>CIVIL WORK'S</b>				
1	Earth work in excavation	CFT	410	20	8,200.00
2	Earth filling	CFT	136.66	30	4,099.80
3	Brick Flat Soling	SFT	130	105	13,650.00
4	PCC 1:3:6	CFT	35	325	11,375.00
5	RCC 1:1:5:3	CFT	390	485	189,150.00
6	Cement plaster outside 1:6	SFT	195	135	26,325.00
7	Cement plaster inside	SFT	195	50	9,750.00
8	Steel	kg	1050	140	147,000.00
9	Framework	SFT	510	95	48,450.00
	<b>Total</b>				<b>457,999.80</b>
<b>B</b>	<b>NEPALI DECORATIVE BRICK WORK'S</b>				
1	Kasimo	NOS	85	250	21,250.00
	Kasimo Kuna	NOS	22	44	968.00
2	2" Phyo	NOS	85	250	21,250.00
	2" Phyo kuna	NOS	22	44	968.00
3	Twa Phyo	NOS	80	250	20,000.00
	Twa Phyo Kuna	NOS	20	44	880.00
4	Sidha Palifo	NOS	140	250	35,000.00
	Sidha Palifo Kuna	NOS	54	44	2,376.00
5	Thulo Ribbon	NOS	60	250	15,000.00
	Thulo Ribbon Kuna	NOS	8	44	352.00
6	Kerafo	NOS	100	250	25,000.00
	Kerafo Kuna	NOS	26	44	1,144.00
7	Ga Tha Butta	NOS	20	250	5,000.00
	Ga Tha Butta Kuna	NOS	8	44	352.00
8	Sano Ribbon	NOS	40	250	10,000.00
	Sano Ribbon Kuna	NOS	16	44	704.00
9	Gol Nagol	NOS	16	250	4,000.00
	Gol Nagol Kuna	NOS	8	44	352.00
10	Thulo Fa Butta	NOS	12	250	3,000.00
	Thulo Fa Butta Kuna	NOS	8	44	352.00
11	2" Shingha	NOS	26	375	9,750.00
12	9" Gold Dachi Appa	NOS	30	660	19,800.00
13	3" Shingha ,garuda + astamangal	NOS	40	400	16,000.00
14	Dachhi Appa	SFT	490	660	323,400.00
	Dachhi Appa Kuna	SFT	350	42	14,700.00
	<b>Total</b>				<b>551,598.00</b>

<b>C</b>	<b>COPPER METAL WORK'S</b>				
1	6" HT 22 guage eaves board	RFT	58	1100	63,800.00
2	6" HT 22 guage jhallar	RFT	58	1100	63,800.00
3	20 guage roaster	NOS	4	3000	12,000.00
4	20 guage chatur maharaj	NOS	4	3000	12,000.00
5	2.5" wind bell bronze	NOS	60	500	30,000.00
6	Bhangi + Gajur 3'HT	Set	1	80000	80,000.00
7	5"*5" Big Nagol 22 guage	RFT	20	2000	40,000.00
8	3"*3" Small Nagol 22 guage	RFT	80	1600	128,000.00
9	7"*7" Big Khwapa Bronze	NOS	4	1200	4,800.00
10	5"*5" Small Khwapa	NOS	20	1000	20,000.00
11	Side gate as per design	SFT	45	400	18,000.00
12	Main gate as per design	SFT	100	400	40,000.00
13	22 guage copper plain sheet	SFT	220	1100	242,000.00
	<b>Total</b>				<b>754,400.00</b>
<b>D</b>	<b>WOODEN WORK'S</b>				
1	Decorative Bilampu 6"*4"*4'6"	NOS	10	25000	250,000.00
2	Decorative Kusur 6"*4"*5'0'	NOS	4	26000	104,000.00
3	3"*3" Nagol Wooden Small	RFT	75	950	71,250.00
4	5"*5" Nagol Wooden Big	RFT	30	1300	39,000.00
	<b>Total</b>				<b>464,250.00</b>
<b>E</b>	<b>STONE WORK'S</b>				
	10"*16" HT Buddha	NOS	4	18000	72,000.00
<b>F</b>	<b>Electricity Work</b>	L.S	1	75000	75,000.00

<b>Taxable</b>	<b>2,375,247.80</b>
<b>VAT 13%</b>	<b>308,782.21</b>
<b>Total</b>	<b>2,684,030.01</b>

**DAKSHIN BARAHI BRICKS INDUSTRIES PVT. LTD.**

**THIMI, DHADHIKOT**

**PROJECT : MANGAL NALANDA BUDDHA VIHARA**

**AT RUDRAPUR , RUPANDEHI (ENTRANCE GATE)**

**CLIENT: NEPAL MAGAR BOUDHA SOCIETY**

**Date: 2082.05.02**

S.NO	DESCRIPTION OF WORK'S	UNIT	QUANTITY	RATE	AMOUNT
	<b>STATUE OF BUDDHA</b>				
1	Earth work in excavation in foundation	CFT	380	20.00	7,600.00
2	Earthfilling trench	CFT	126.66	30.00	3,799.80
3	Brick Flat Soling	SFT	518	105.00	54,390.00
4	PCC 1:3:6	CFT	66.5	325.00	21,612.50
5	Local Brick Wall 1:6	CFT	360.75	500.00	180,375.00
6	Stone wall 1:6	CFT	385	300.00	115,500.00
7	RCC Nominal Steel	CFT	35	485.00	16,975.00
8	Nagol Butta	RFT	50	250.00	12,500.00
	Nagol Butta Kuna	NOS	4	44.00	176.00
9	Kasimo Butta	RFT	50'	250.00	12,500.00
	Kasimo Butta Kuna	NOS	4	44.00	176.00
10	Illa Butta	RFT	100'0	250.00	25,000.00
	Illa Butta Kuna	NOS	8	44.00	352.00
11	Naag Jiu	RFT	50'0	250.00	12,500.00
	Naag Tauko	NOS	2	600.00	1,200.00
	Naag Ghati	NOS	2	100.00	200.00
	Naag Kuna	NOS	4	44.00	176.00
12	4" THK Fa Loha	RFT	50	1,200.00	60,000.00
13	Dachhi Appa	SFT	110	660.00	72,600.00
	Dachhi Appa Kuna	NOS	50	42.00	2,100.00
14	Buddha statue base as for design set	set	1	1,000,000.00	1,000,000.00
	<b>Total</b>				<b>1,599,732.30</b>

<b>Taxable</b>	<b>1,599,732.30</b>
<b>VAT 13%</b>	<b>207,965.20</b>
<b>Total</b>	<b>1,807,697.50</b>



### ***Schedule of Regular Programs***

*Under the regular program schedule, potential activities can be included in the annual plan and conducted as per a set timetable. The details of these activities are outlined in Annex 5.*

<b>S.N</b>	<b>Description of Program</b>	<b>Time</b>
1.	<b>Educational Program:</b> 1.Pariyatti education (for monks and nuns). 2. Study classes on Buddhist philosophy and 3.Theravāda tradition. 4.Scholarship programs to support poor and talented students. 5.Dharma education/awareness classes for children and youth.	(Weekly, Monthly, or Quarterly)
2.	<b>Social Program:</b> 1.Blood donation and health camps. 2.Tree plantation and environmental protection programs. 3.Disaster relief programs (assistance during earthquakes, floods, fires, etc.). 4.Service and support for the elderly, helpless, and orphans.	(At least twice a year)
3.	<b>Cultural Program:</b> 1.Workshops/seminars for preservation of language and culture. 2.Museum visits and exhibition programs. 3.Magar cultural festival.	(Weekly, Monthly, or Quarterly)
4.	<b>Religious Program:</b> 1.Dhamma sermons by monks, nuns, and invited speakers. 2.Regular organization of meditation camps. 3.Worship and prayer programs on every full moon day, new moon day, and special occasions. 4.Ancestral or family worship according to traditional Buddhist Magar customs. 5.Grand celebration of Annual Buddha Jayanti(Buddha’s Birthday).	(Weekly, Monthly, or Quarterly)  (10-day, 7- day, or short meditation camps)

